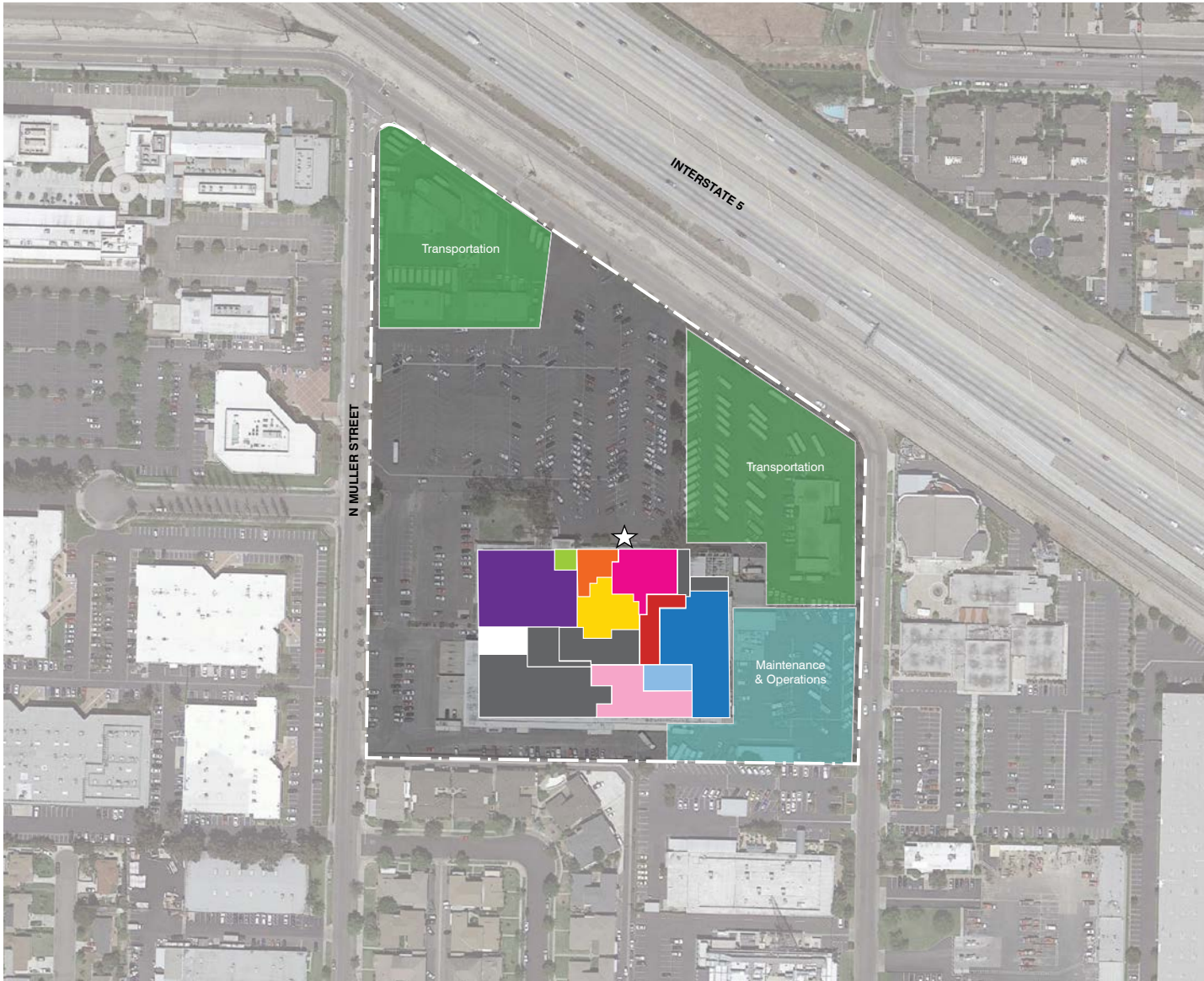


7.21

MASTER PLAN DIAGRAMS DISTRICT CAMPUS | OVERVIEW



- Classrooms, CR
- Science Labs, SCI
- Special Education
- Electives
- Computer Lab
- Admin / Faculty
FW - Faculty Work, FL - Faculty Lounge
- Library / MPR
- Food Service
- Physical Education / Athletics
PE - Physical Education, LR - Locker Room
- Support Spaces
S - Storage, T - Toilets, U - Utility, C - Custodial

- Hardcourts
- Play Fields
- ☆ Main Entrance
- Drop-off

200 ft
1" = 200'

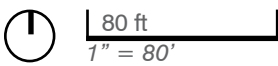
MASTER PLAN DIAGRAMS DISTRICT CAMPUS | EXISTING

Anaheim Union High School District began a long range Facilities Master Plan in October 2013. Over the last 7 months, the District has engaged school site staff, teachers, principals, community members, and leadership in the discussion about what the vision of AUHSD's schools should become. This existing site map represents the uses identified in the needs assessment study, completed in February 2014. Additional input was incorporated into the plan based on LPA's site walks and Site Committee meetings in November - December 2014, where there was a review of each school's site committee questionnaire responses and initial planning opportunities were identified. Facility Master Planning is, by its nature, a broad endeavor. The Facilities Master Plan (FMP) developed is a "living" document and also a strategic planning tool that will identify short-term and long-term facility goals for the District.



- Classrooms, CR
- Science Labs, SCI
- Special Education
- Electives
- Computer Lab
- Admin / Faculty
FW - Faculty Work, FL - Faculty Lounge
- Library / MPR
- Food Service
- Physical Education / Athletics
PE - Physical Education, LR - Locker Room
- Support Spaces
S - Storage, T - Toilets, U - Utility, C - Custodial
- Hardcourts
- Play Fields
- Main Entrance
- Drop-off

Current Enrollment :	390
Teaching Stations	
Classrooms	27
Sub Total:	27
<hr/>	
Grand Total:	27



7.21

MASTER PLAN DIAGRAMS

DISTRICT CAMPUS | PROPOSED OVERALL + CIRCU.

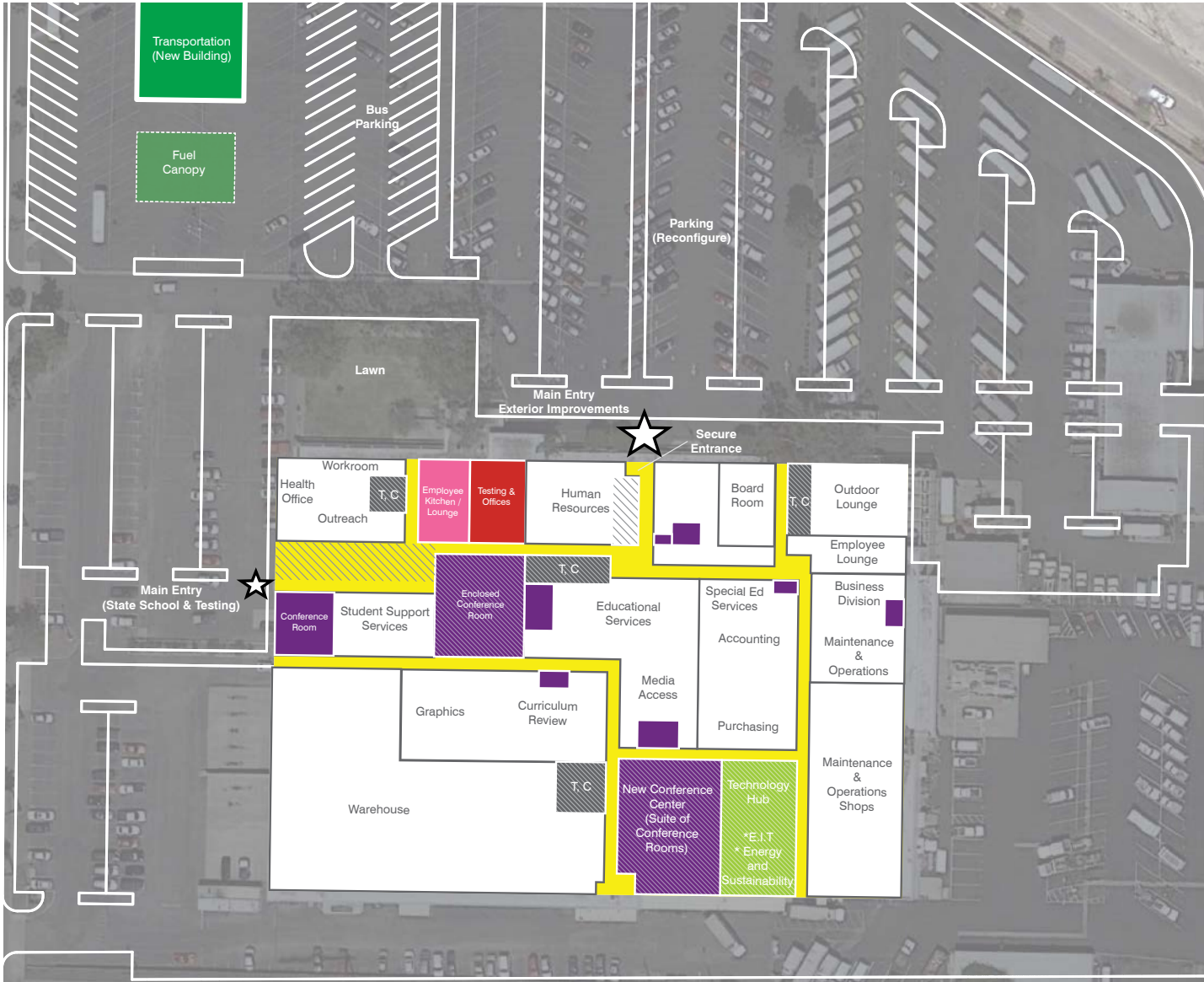


- Main Entry Point / Circulation
- Drop-Off
- Fire Lane
- Fencing / Landscape Buffer
- Existing Building
- New Construction
- Learning Courts
- Main Quad
- Hardcourts
- Play Fields
- Main Entrance

200 ft
1" = 200'

7.21

MASTER PLAN DIAGRAMS DISTRICT CAMPUS | PROPOSED

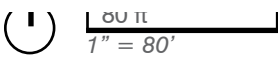


Modernization
New Construction
Reconfigure

- Classrooms, CR
- Science Labs, SCI
- Special Education
- Electives**
Lab spaces will be determined by program need. They could include PE, STEW, or other elective.
Computer Lab
- Admin / Faculty**
FW - Faculty Work, FL - Faculty Lounge
- Library / MPR**
- Food Service**
- Physical Ed / Athletics**
PE - Physical Education, LR - Locker Room
- Support Spaces**
S - Storage, T - Toilets, O - Office
U - Utilities & Building Support, C - Custodial

- Learning Courts
- Main Quad (Site Improvements)
- Harcourts
- Play Fields
- Main Entrance
- Fire Lane
- Fencing / Landscape Buffer
- Drop - Off

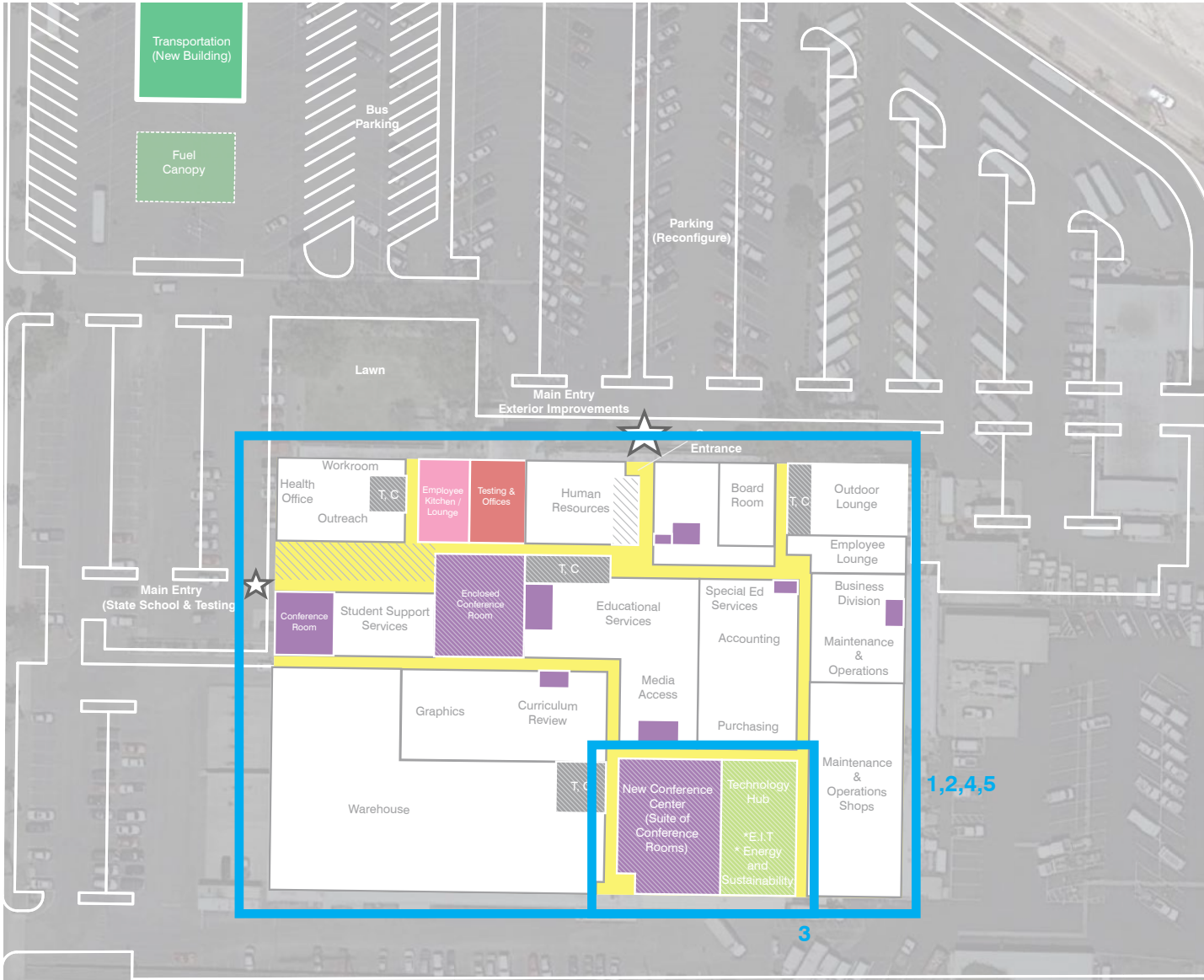
Planning Capacity:	390
Teaching Stations	
Classrooms	28
Sub Total:	28
Grand Total:	28



7.21

MASTER PLAN DIAGRAMS

DISTRICT CAMPUS | PROPOSED-PHASE 1



Modernization

New Construction

Reconfigure

- Classrooms, CR
- Science Labs, SCI
- Special Education
- Electives
Lab spaces will be determined by program need. They could include PE, STEAM, or other elective.
- Computer Lab
- Admin / Faculty
FW - Faculty Work, FL - Faculty Lounge
- Library / MPR
- Food Service
- Physical Ed / Athletics
PE - Physical Education, LR - Locker Room
- Support Spaces
S - Storage, T - Toilets, O - Office
U - Utilities & Building Support,
C - Custodial

- Learning Courts
- Main Quad
(Site Improvements)
- Hardcourts
- Play Fields
- ☆ Main Entrance
- Fire Lane
- Fencing / Landscape Buffer
- Drop - Off

- PROPOSED SCOPE OF WORK**
1. Replacement of roof and upgrades to HVAC system
 2. Modernization of existing spaces. Minor reconfiguration at main entries
 3. Reconfigure existing central kitchen space to conference rooms and offices
 4. Safety & security improvements including locks and cameras
 5. Technology equipment and infrastructure upgrades including district-wide phone system (*Scope of work to be determined)

80 ft
1" = 80'

1,2,4,5

3

MASTER PLAN DIAGRAMS

DISTRICT CAMPUS | PROJECT COST SUMMARY

SCOPE OF WORK CATEGORIES	TOTAL	PROPOSED PHASE 1
1. Modernize & Reconfigure Existing Classroom & Lab Buildings	\$1,201,000	\$1,201,000
2. Existing Building Systems & Toilets	\$8,023,000	\$3,000,000
3. Site Utilities	\$2,974,000	\$0
4. New Construction Classrooms	\$0	\$0
5. Design Lab, Science, and Career Tech Education	\$0	\$0
6. Performing Arts Improvements	\$0	\$0
7. Multipurpose / Food Service Improvements	\$0	\$0
8. Physical Education Improvements	\$0	\$0
9. Administration & Staff Support	\$15,939,000	\$6,500,000
10. Student Collaboration & Student Support Services	\$0	\$0
11. Safety & Security	\$7,675,000	\$500,000
12. Outdoor Learning Quads	\$2,724,000	\$0
13. Exterior Play Fields & Hardcourts	\$0	\$0
14. 21st Century Learning Classroom Flexibility	\$0	\$0
15. Technology Infrastructure	\$548,000	\$274,000
Total Construction / Project Cost (2014\$)	\$39,084,000	\$11,475,000